

CLYFFORD

DESIGN RODOLFO DORDONI



Struttura: realizzata con trafilato di metallo tagliato al laser, spessore 10 mm. Finitura della struttura color Peltro opaco.

Finiture piano:

Top superiore in MDF, spessore 25 mm, con sagomatura sui bordi:
- laccata lucida nei colori Fango, Granito, Peltro e Petrolio;
- rovere laccato Moka a poro aperto.

Base: piedini cilindrici sagomati e raccordati. Scivolanti protettivi in nylon nero.

Structure: laser-cut drawn metal base, 10 mm in thickness. Matt Pewter-colored structure finish.

Top finishes:

Upper top made of MDF, 25 mm in thickness, with shaped edges:
- glossy lacquered in Mud, Granite, Pewter and Petroleum colors;
- finished in open pore Moka lacquered oak.

Base: shaped, joined cylindrical feet. Black nylon glides.

Gestell: aus lasergeschnittenem, gezogenem Metall, Dicke 10 mm. Finish des Gestells in mattzinnfarbig Lackierung.

Ausführungen der Platte:

Oberes Top aus 25 mm dickem MDF mit seitlichem Randprofil:
- Glanzlackfinish in den Farben Schlamm, Granit, Zinn und Petroleum;
- aus offenporig in Mokka lackierter Eiche.

Grundgestell: Zylinderförmige, verbundene Füße. Bodenaufgabe durch schwarzen Nylonrutschschutz.

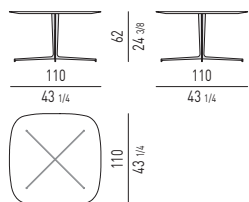
Structure : en métal étiré découpé au laser, épaisseur 10 mm. Finition de la structure mat couleur Étain.

Finitions du plateau :

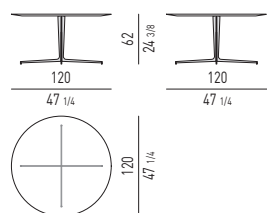
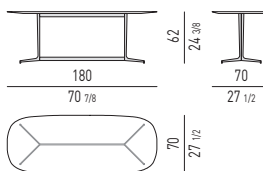
Plateau supérieur en MDF, épaisseur 25 mm, avec profil arrondi :
- finition laquée brillante dans les couleurs Boue, Granit, Étain et Pétrole;
- chêne laqué Moka à pore ouvert.

Base : pieds cylindriques profilés et raccordés. Anti-glislements de protection en nylon noirs.

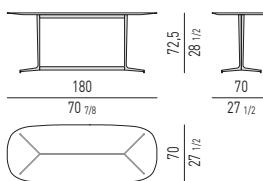
TAVOLI LOUNGE | LOUNGE TABLES



CONSOLLE | CONSOLE TABLE

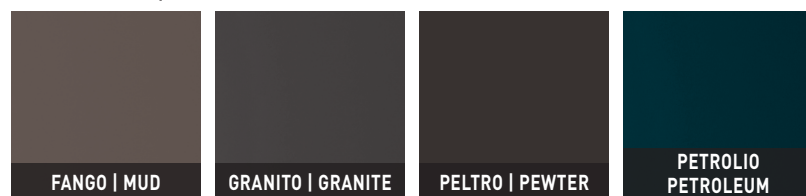


SCRITTOIO | WRITING DESK

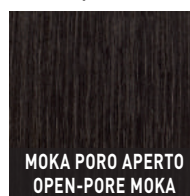


FINITURE PIANO TOP FINISHES

LACCATO LUCIDO | GLOSSY LACQUERED



ROVERE | OAK



FINITURA STRUTTURA STRUCTURE FINISH

METALLO | METAL

