

DUCHAMP

DESIGN RODOLFO DORDONI



VERSIONE LAMIERA SMERIGLIATA

Piano: in lamiera smerigliata. Finitura con vernice trasparente lucida.

Struttura: in ferro pieno, lavorato artigianalmente.

VERSIONE BLACK-NICKEL

Struttura: in metallo, spessore 10 mm, finitura Black-Nickel. Appoggio a terra con scivolanti in nylon.

Finiture piano:

- MDF, spessore 16 mm, rivestito in cuoio colore Testa Di Moro;
- impiallacciato rovere, spessore 20 mm, laccato colore Nero a poro aperto.

LAPPED PLATE VERSION

Top: in lapped plate. Finished in transparent gloss paint.

Frame: in solid iron with artisan workmanship.

BLACK-NICKEL VERSION

Frame: metal, 10 mm thickness, Black-Nickel finish. Nylon glides.

Top finishes:

- MDF, 16 mm in thickness, covered in Dark Brown saddle-hide;
- oak-veneered, 20 mm in thickness, with open-pore Black lacquer finish.

AUSFÜHRUNG GESCHLIFFENEM BLECH

Platte: aus geschliffenem Blech; Endbearbeitung mit transparentem Glanzlack.

Gestell: volle Eisenstruktur handwerklich gefertigt.

AUSFÜHRUNG BLACK-NICKEL

Struktur: Metall, Stärke 10 mm, Black-Nickel-Finish. Bodenaufgabe aus gleitfähigem Nylon.

Ausführungen der Platte:

- MDF, Stärke 16 mm, mit dunkelbraunem Kernleder überzogen;
- mit Eichenfournier, Stärke 20 mm, offenporig Schwarz lackiert.

VERSION EN TÔLE POLIE À L'ÉMERI

Plateau : en tôle polie à l'émeri avec vernis brillant transparent.

Structure : pleine en fer travaillée de façon artisanale.

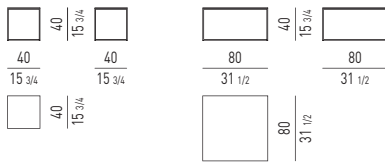
VERSION EN BLACK-NICKEL

Structure : en métal, épaisseur 10 mm, finition Black-Nickel. Patins d'appui au sol en nylon.

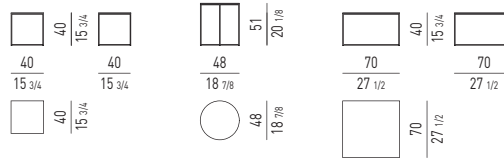
Finitions plateau :

- MDF, épaisseur 16 mm, recouvert de cuir sellier couleur Tête de Maure ;
- Plaqué rouvre, épaisseur 20 mm, laqué à pore ouvert couleur Noir.

VERSIONE LAMIERA SMERIGLIATA | LAPPED PLATE VERSION



VERSIONE BLACK-NICKEL | BLACK-NICKEL VERSION



VERSIONE LAMIERA SMERIGLIATA | LAPPED PLATE VERSION

FINITURA PIANO E STRUTTURA TOP AND FRAME FINISH

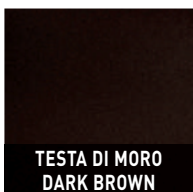
METALLO | METAL



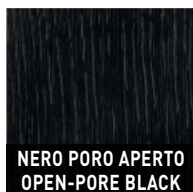
VERSIONE BLACK-NICKEL | BLACK-NICKEL VERSION

FINITURE PIANO TOP FINISHES

CUOIO | SADDLE-HIDE



ROVERE | OAK



FINITURA STRUTTURA FRAME FINISH

METALLO | METAL

